



Drone UT Wall Thickness measurement for boiler installations



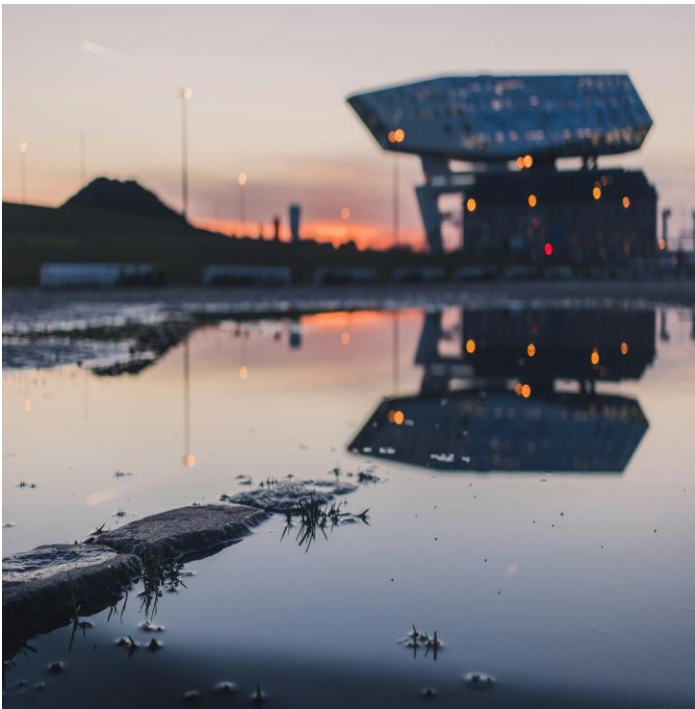
The mission

Scaffolding projects still take up too much of company's maintenance and inspection budgets, affecting the lead time or downtime of production. We recently demonstrated that there is another way at a waste processing plant in the port of Antwerp. Instead of traditional scaffolding, which costs a fortune, we deployed a drone, fitted with a bespoke ultrasonic (UT) thickness gauge probe, to inspect the wall thickness of their boiler pipes.

CUSTOM-BUILT

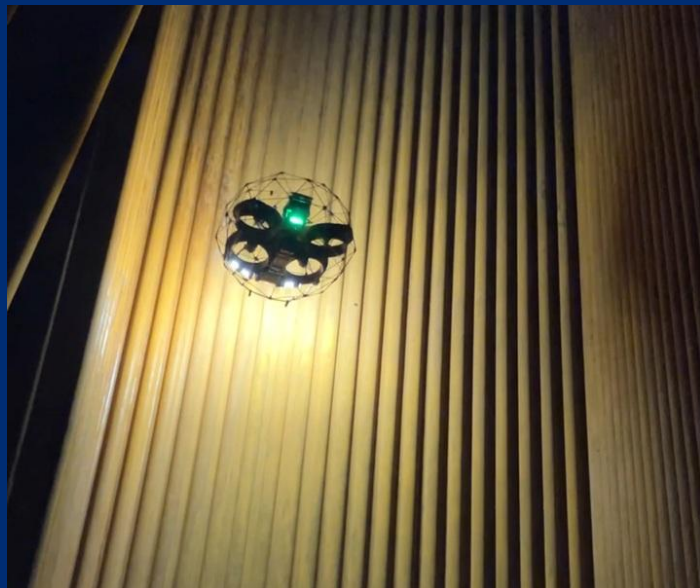
Thanks to the tailor-made probe holder, which fits precisely around the pipes to be inspected, we achieve a throughput of up to 200 reliable measurement points per day*.

**Provided that the installation is clean and sufficiently accessible*



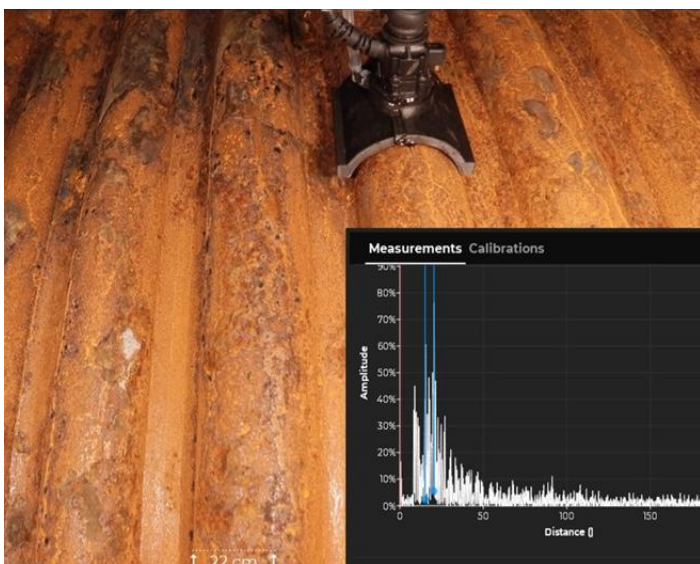
The challenge

Our client in the Antwerp harbour challenged us to see if we could find a better balance between mandatory regulatory compliance (ensuring asset integrity) and operational efficiency (controlling costs, downtime loss and safety risks).



Our approach

Vinçotte and SkyeBase's drone-based UT inspection **optimizes inspection time and down time**. We fly and take measurements **simultaneously**. We **optimize your inspection** budget, by removing your need for scaffolding, and **optimize your downtime and** inspection budget. We **completely eliminate human risk**, as inspectors no longer need to climb into dangerous, confined spaces.



The results

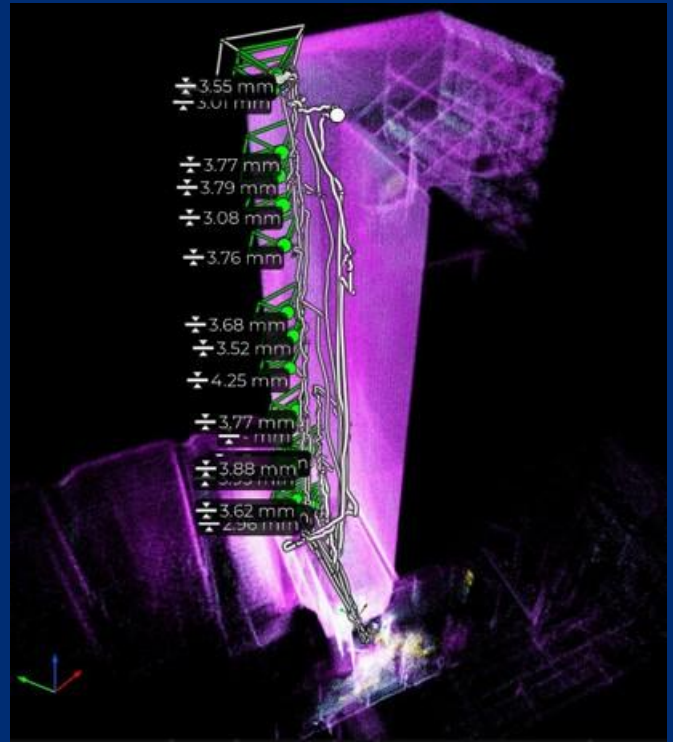
The examination provides the customer with **unprecedented insights** into the state of their boiler installations. The inspection was completed considerably faster and was **therefore over 50% cheaper** than a conventional inspection. Removing the need for scaffolding **eliminated thousands of euros** from the budget. Production could restart with **downtime reduced by 25%**.



a kiwa company

UT DRONE WALL THICKNESS MEASUREMENTS FOR BOILER INSTALLATIONS

Using drone and 3D printing technology for UT inspections modernizes the inspection of industrial boiler installations. The accompanying software assists our specialists in identifying potential anomalies. Thanks to in-depth analysis with features like heatmaps, it significantly enhances the accuracy of our assessments. Our digitized inspection data proves valuable in subsequent inspections, allowing for the recognition of damage trends over time.



CONTACT US

Sam De Mondt – Account Manager
+32 478 68 07 60
sdemondt@vincotte.be



a **kiwa** company