

An integrated approach to your tank inspections



a kiwa company

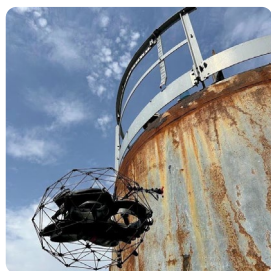
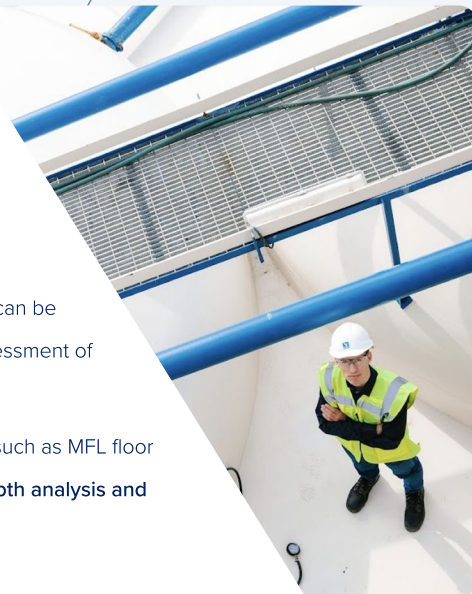
Vincotte – Expertise & Advanced Inspection Techniques

At Vincotte, we combine **state-of-the-art technologies** with in-depth expertise in inspection standards such as **ASME, API, EN, ISO and EEMUA**. Our **qualified inspectors** ensure that all your assets remain compliant with these standards and legislation.

RVI is an essential part of a broader tank inspection process.

While RVI assists in the **initial detection and localization of defects**, UT measurements with drones can be carried out **safely and efficiently in hard-to-reach or high locations**, enabling rapid and reliable assessment of damage or corrosion.

This technique works complementary with other advanced NDT techniques. Advanced techniques such as MFL floor scanning, PA Edge scanning, Crawler (ferrous and non-ferrous) and other methods provide an **in-depth analysis and validation** of the identified defects .



Skyebase – Remote Visual Inspection (RVI) Partner



For **Remote Visual Inspection (RVI)**, we collaborate with **Skyebase**, our specialised partner in **drone inspections and digital image processing**. RVI plays a crucial role in the inspection process by quickly detecting **surface defects, corrosion and other anomalies**. Thanks to advanced technologies, Skyebase offers **safe and efficient inspections**, resulting in **detailed analyses and accurate trend monitoring**.

Advantages of UT application with drones for tank and site inspections

UT application with drones make it possible to **inspect** tank walls and roofs, both fixed and floating, **more quickly and more frequently**.

Thanks to digital images and videos combined with UT measurements, **information can be stored, shared and analyzed easily**.

This helps to **detect problems** such as corrosion, leaks or structural abnormalities **at an early stage**.

- ✓ **Safety:** Avoids needing to work at heights or in areas that are difficult to access.
- ✓ **Efficiency:** Inspections can be carried out more quickly compared to conventional methods.
- ✓ **Accessibility:** Possible in places where human access is limited or dangerous.
- ✓ **Consistent results:** Drones can follow programmed routes for repeatable and uniform measurements.
- ✓ **Early detection:** Problems such as corrosion or wall thickness reduction can be identified more quickly.
- ✓ **Cost-effective:** Reduces the need for scaffolding, hoisting equipment or operational downtime.
- ✓ **License:** We unburden you by handling all necessary drone permits for outdoor flights, based on our official certification.



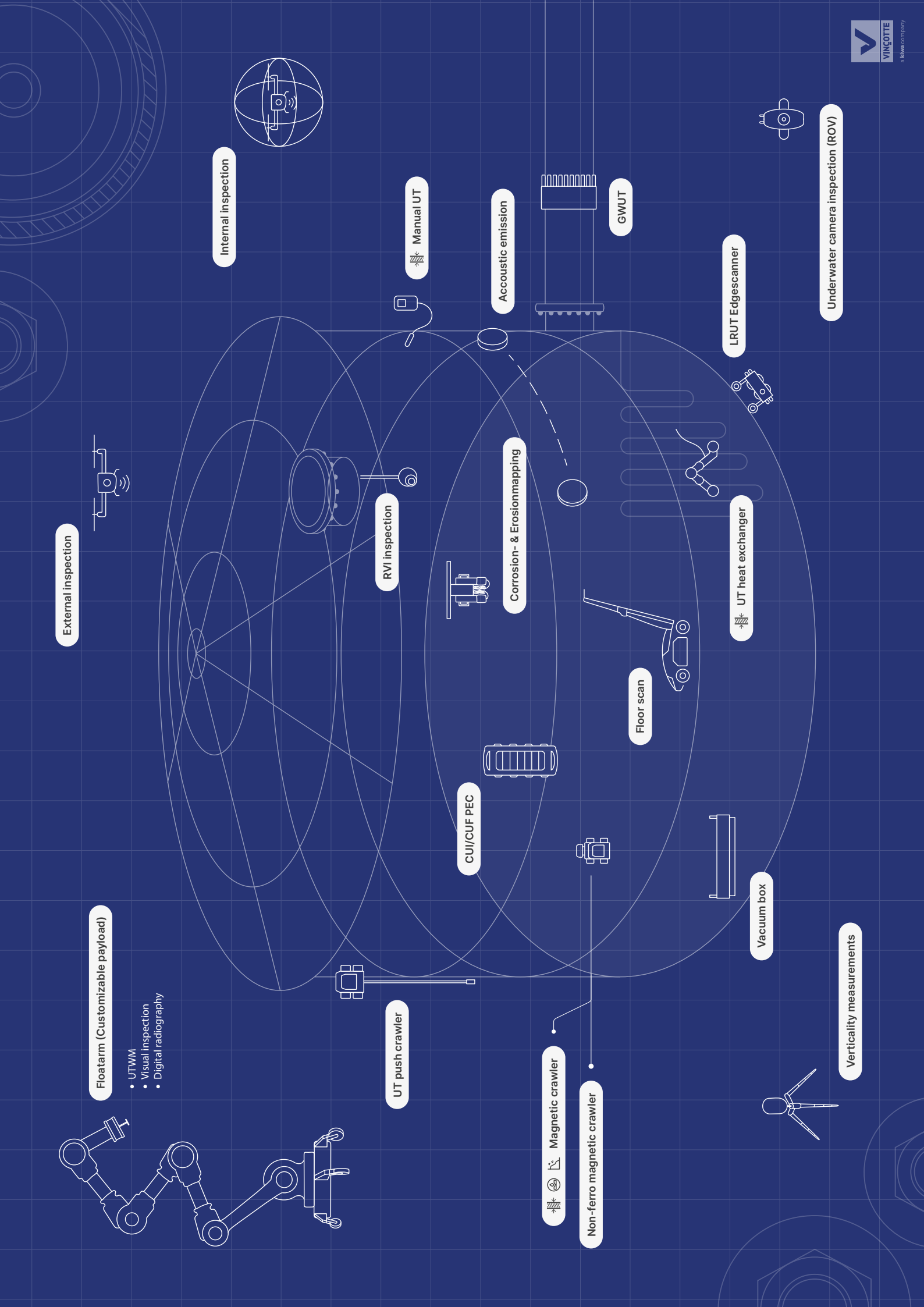
Scan the QR code and read all about it or contact one of our tank inspection experts

Product Manager
Sales Manager (BE)
Sales Manager (NL)

Thierry Floin
Sam De Mondt
Jamal Haanskorf

+32 490 58 10 66
+32 478 68 07 60
+31 6 1090 5447

tfloin@vincotte.be
sdemondt@vincotte.be
Jamal.Haanskorf@kiwa.com



External inspection

Internal inspection

Floatarm (Customizable payload)

- UTWM
- Visual inspection
- Digital radiography

UT push crawler

CUI/CUF PEC

Corrosion- & Erosion mapping

RVI inspection

Manual UT

Accoustic emission

GWUT

LRUT Edgescanner

UT heat exchanger

Floor scan

Vacuum box

Underwater camera inspection (ROV)

Verticality measurements

Magnetic crawler

Non-ferro magnetic crawler